

# Overview of OPWDD Eligibility and Services



# Topics Covered

- Eligibility
- Front Door Requirements
- Family Support Services
- Waiver Services
- Resources



NYS Office For People With Developmental Disabilities

**Putting People First**

# Eligibility

- OPWDD is looking for:
  - A Developmental Disability diagnosed before the age of 22
    - Intellectual Disability
    - Cerebral Palsy
    - Epilepsy
    - Autism
    - Neurological Impairment
    - TBI (Traumatic Brain Injury)

# Eligibility (cont.)

- OPWDD is looking for:
  - Psychological evaluations with IQ scores
  - Adaptive behavior evaluations



# Types of Eligibility

## ➤ Provisional Eligibility:

- Any child under 8 years old

## ➤ Permanent Eligibility:

- Anyone 8 years or older

# Front Door



## ➤ Requirements:

Everyone requesting new services or service changes must meet these criteria:

- New to OPWDD and need eligibility
- Have eligibility; never received or over a year since receiving OPWDD services
- Have eligibility; only receiving MSC and/or State-Funded services

# Front Door



## ➤ Requirements (cont.):

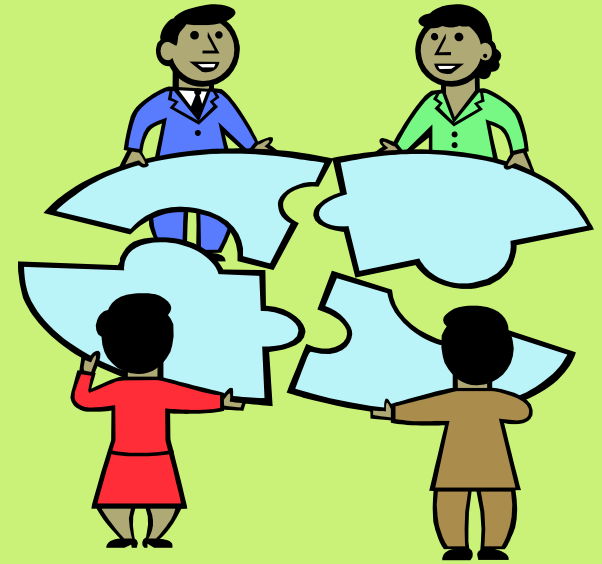
- Must participate in a Family Information Session
- Complete a DDP2 (Developmental Disability Profile) and an assessment by the DDRO (Developmental Disabilities Regional Offices)

# Family Support Services

➤ Just need eligibility from OPWDD to receive services

➤ Services under FSS:

- Advocacy
- Recreation
- Family Reimbursement Program
- Counseling, Training, and Supports





# Waiver Services

- Waivers under OPWDD:
  - Care at Home
  - Home and Community Based Services
- Other Waivers (not provided by OPWDD):
  - Traumatic Brain Injury
  - Nursing Home Transition Diversion

# **Waiver Services: Care at Home**



# Waiver Services

## Care at Home

- Provide services to children with severe developmental disabilities and complex medical conditions living at home with their families.



# Waiver Services

## Care at Home (cont.)

### Eligibility Requirements:

Under age 18

- OPWDD eligibility
- Medicaid eligible
- Complex health care needs for over 12 months

# Waiver Services

## Care at Home (cont.)

### Services:

- Coverage for all routine State Plan Medicaid services including Nursing
- Case Management
- Respite
- Assistive Technologies/Home Adaptations

# **Waiver Services: Home and Community Based Services**



# Waiver Services

## Home and Community Based Services

- Program of supports and services that enables adults and children with developmental disabilities to live in the community as an alternative to Intermediate Care Facilities (ICFs).



# Waiver Services

## Home and Community Based Services (cont.)

### Eligibility Requirements:

- OPWDD eligibility
- Medicaid eligible
- Living at home or in the community



# Waiver Services

## Home and Community Based Services (cont.)

### Services:

- Community Habilitation
- Day Habilitation
- Residential services
- Supported Employment
- Prevocational Services
- Respite
- EMOD/Adaptive Tech
- Plan of Care Support Services
- Family & Educational Training\*\*

# Resources

- Office for People with Developmental Disabilities
  - [opwdd.ny.gov](http://opwdd.ny.gov)
- Front Door Contact
  - Finger Lakes Front Door Team
    - [1-855-OPWDDFL](tel:1-855-OPWDDFL) (585-679-3335)

# Topics Covered

- Eligibility
- Front Door Requirements
- Family Support Services
- Waiver Services
- Resources



NYS Office For People With Developmental Disabilities

**Putting People First**



**Ursula Nicholson**  
**[unicholson@starbridgeinc.org](mailto:unicholson@starbridgeinc.org)**  
**(585) 546-1700**

**Any Questions?**