

UNDERSTANDING THE CONTINUUM OF SERVICES

What are Related Services?

Related services help children with disabilities benefit from their special education program by providing extra help and support in needed areas, such as speaking or moving. Related services can include, but are not limited to, any of the following: speech therapy, occupational and physical therapy, vision services, counseling services, and school nurse services. Related services can be delivered either in or out of the classroom based on what is written in the IEP.

What is Resource Room?

Resource room is a service designed to supplement general education or special education classroom instruction. A special educator works with a group no larger than five students who have similar needs. It is NOT simply homework help.

What is an Integrated Co-Taught Classroom (ICOT)?

NYS does not require districts to provide this option on the continuum of services. Some districts have ICOT classrooms and some do not. An ICOT classroom is co-taught by a general educator and a special educator and is considered a general education placement. The classroom can have no more than 12 students with IEPs and must have at least the same number of students without IEPs, if not more.

What are Special Classes (15:1, 12:1)?

Special classes, sometimes referred to as self-contained classrooms, are made up of students with disabilities and are taught by a special educator. Students in these classes are grouped according to these similar needs:

- academic/educational achievement
- social and physical development
- management needs including environmental modifications and needs for additional human or material resources

The maximum class size for a 15:1 program is 15 students. The maximum class size for a 12:1 program is 12 students. If an additional support person is needed in the class, the program is written as 15:1+1.

It is important to note that not all schools have the smaller class size options in their district. Check with your CSE chair to see what your district offers. If the school doesn't have a smaller class size in district, the student may be placed out of district in a setting that offers smaller class sizes.



UNDERSTANDING THE CONTINUUM OF SERVICES

Is there a class size option with fewer than 12 students?

Yes. There are 8:1+1 and 6:1+1 program options available for students with disabilities who require a highly intensive, individualized program for instruction and behavioral needs.

There is a 12:1+3 program option for students with severe multiple disabilities whose program is primarily focused on daily living skills. The ratio of students to adults is 3 to 1. This means that for every three students, an adult must be present.

Can a special class include students from other grade levels?

Yes. Students who are under 16 years of age can be placed with students who are within 36 months of their chronological age. For example, a 6th grade student in a 12:1+1 program might also have 7th and 8th grade students in the same classroom. There is not a chronological age-range maximum for students 16 and older. There also is not a chronological age-range maximum for students with severe multiple disabilities who are primarily in a life skills class.

What is an Out of District placement?

Schools must provide students a free, appropriate public education. If a school doesn't have a program with the appropriate supports and services within the district, the school can look at program options that are outside of the home school district. The school is required to transport the student to and from their program. An out of district placement could be a BOCES program.

What is a Residential placement?

The CSE may recommend placement for a student with a disability in an approved private school (either in-state or out of state) when it determines that the student cannot be appropriately educated in the home school district, a neighboring district, or in a BOCES program.

What is Home/Hospital instruction?

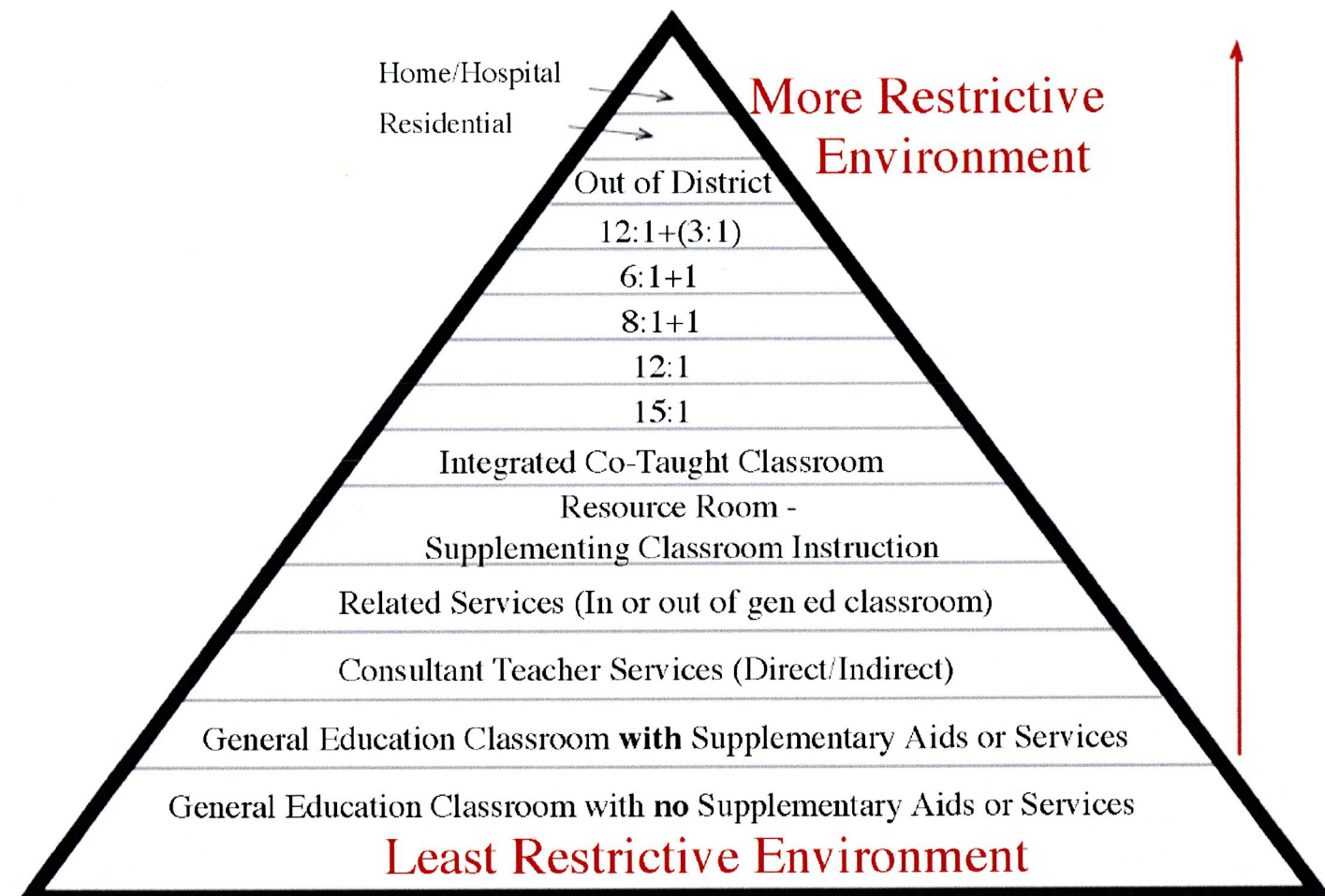
Home/Hospital instruction is special education instruction and related services delivered on an individual basis to a student with a disability who is at home or in a hospital. The minimum requirement of instruction for an elementary student is 5 hours/week and the minimum requirement for a secondary student is 10 hours/week.



UNDERSTANDING THE CONTINUUM OF SERVICES

UNDERSTANDING THE CONTINUUM OF SERVICES

NYS provides an array of services to meet the individual needs of students with disabilities. Here are terms you need to know as you talk about options and supports for your child at school and how to document those in their IEP.



Continuum of Special Education Services

Who will decide which level of the continuum is appropriate for my student?

Input should come from the school team, the family, and the student, if appropriate. Placement is decided at the CSE (Committee of Special Education) meeting. This discussion should take place after these factors are determined:

- your student's present levels of performance
- your student's needs and IEP goals
- determination of appropriate supports and services

What is Least Restrictive Environment (LRE)?

Least Restrictive Environment (LRE) is the principle that guides a student's educational program. Students with disabilities should be with typical peers in general education to the maximum extent that is appropriate, and be educated as close as possible to the student's home. "Appropriate" may look different for each student.

What are Supplementary Aids or Services?

These refer to supports that can be provided in general education classes or other education-related settings that enable students with disabilities to be educated with students without disabilities to the maximum extent appropriate. Examples could include: materials in larger print, use of an FM system, assistive technology, teacher training and support, extra time to take tests, and more.

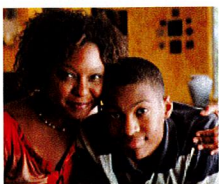
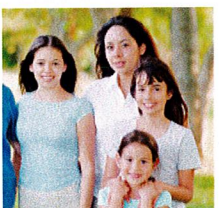
Before a CSE places a student with a disability in a more restrictive setting than the general education classroom, they must consider using supplementary aids and services to help the student succeed in the LRE placement.

What are Consultant Teacher (CT) Services?

CT services are those provided by a special educator in the general education classroom.

- Direct CT services are provided directly to the student.
- Indirect CT services are provided to the general education teacher on behalf of a student.

A student's IEP should indicate in which specific class(es) the CT services will be provided and should specify how many hours per week. The minimum amount of CT service is 2 hours per week.



Still have questions?

Contact us at (585) 546-1700 or starbridgeinc.org/contact-us

